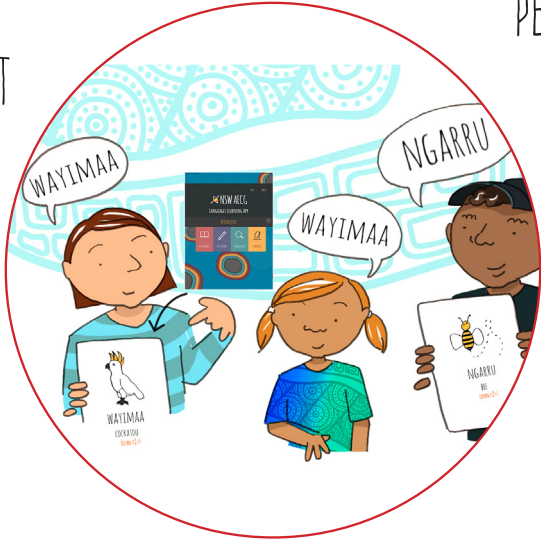


NSW AECG INC AND NSW DEPARTMENT OF EDUCATION PARTNERSHIP AGREEMENT

SCHOOLS WILL RESPECT THE IDENTITY, CULTURE, HERITAGE AND LANGUAGES OF ABORIGINAL STUDENTS AND BE WELCOMING AND RESPECTFUL PLACES



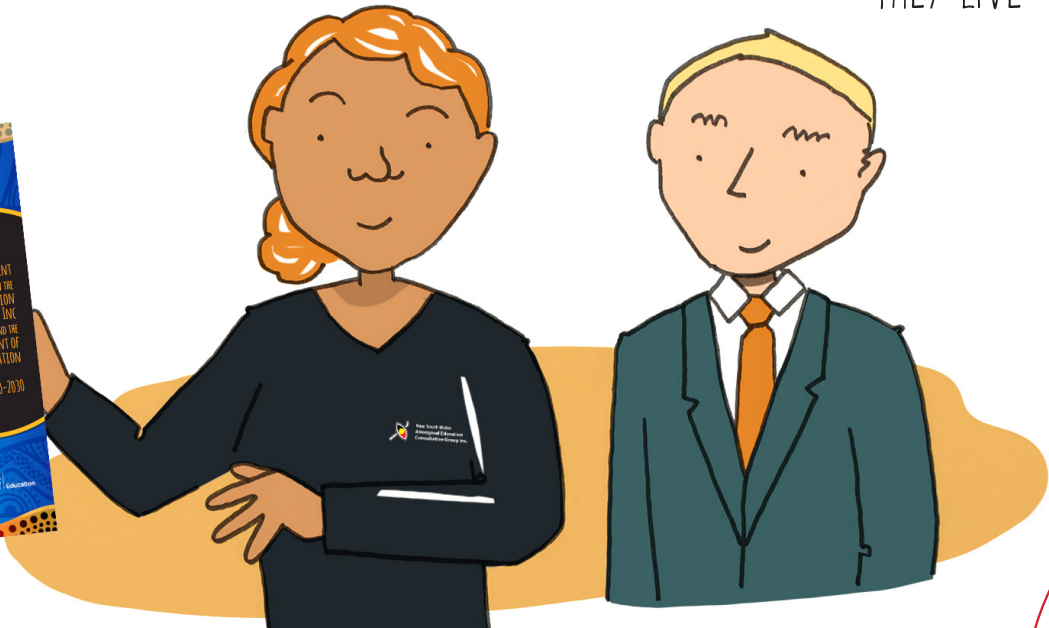
NSW AECG AND THE DEPARTMENT OF EDUCATION WILL WORK TOGETHER SO EVERY ABORIGINAL CHILD AND YOUNG PERSON CAN ACHIEVE THEIR POTENTIAL THROUGH EDUCATION



ALL STUDENTS IN NSW WILL UNDERSTAND THE TRUE HISTORY OF THE LANDS ON WHICH THEY LIVE



ABORIGINAL PARENTS, CAREGIVERS, COMMUNITIES, STUDENTS AND STAFF ACROSS NSW HAD THE OPPORTUNITY TO HAVE THEIR VOICES HEARD IN THE DEVELOPMENT OF THIS NEW PARTNERSHIP AGREEMENT



HIGHLIGHTS THE IMPORTANCE OF CONSULTATION WITH COMMUNITIES AT THE LOCAL LEVEL, ACKNOWLEDGING THE AECG'S GRASSROOTS STRUCTURE



WALKING TOGETHER, WORKING TOGETHER



New South Wales
Aboriginal Education
Consultative Group Inc.

