

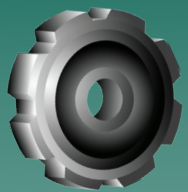
# EXPRESSIONS OF INTEREST



# STEM YOUTH DEVELOPMENT CAMP

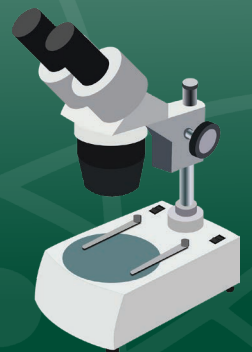
Berry

17<sup>th</sup> - 19<sup>th</sup> June 2019



Head to the NSW AECG Inc. website link below to find out more information and to download a registration form. Alternatively you can contact the NSW AECG Secretariat on 9550 5666 and [info@aecg.nsw.edu.au](mailto:info@aecg.nsw.edu.au)

<https://www.aecg.nsw.edu.au/policies-and-programs/stem-camps/>



New South Wales  
Aboriginal Education  
Consultative Group Inc.



Aboriginal  
Education &  
Communities



# Expression of Interest (EOI)

## Berry STEM camp 17<sup>th</sup> – 19<sup>th</sup> June 2019

The New South Wales Aboriginal Education Consultative Group Inc. (NSW AECG Inc.) in conjunction with the Department of Education's, Aboriginal Education and Communities and the Aboriginal and Torres Strait Islander Mathematics Alliance (ATSIMA), will be conducting a STEM Youth Development Camp for Aboriginal students from Years 5 to 11. To commence the process the NSW AECG Inc. is calling for Expressions of Interest from schools with Aboriginal students in the nominated years.

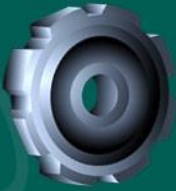
The camp will contribute to creating the generational change required for students to achieve better outcomes at school and access post-school learning and employment pathways, in the areas of Science, Technology, Engineering and Mathematics. Camps such as these assist in opening up careers of the future for Aboriginal students.

The NSW AECG Inc. is committed and actively involved in supporting and raising the academic achievement of Aboriginal students. We aim to empower students to be active learners in their education and training by providing opportunities to develop skills in leadership roles within their schools and communities. This camp will look at opportunities that can inspire and motivate students who may be thinking of a career in STEM or who simply want to challenge themselves.

Schools should forward Expressions of Interest (EOI) on behalf of students hoping to attend the camp. EOIs should be forwarded to the NSW AECG Inc. Secretariat by either email: [info@aecg.nsw.edu.au](mailto:info@aecg.nsw.edu.au) or by Fax: 02 95503361. EOIs must be received by COB, Monday 20th May 2019. No EOIs will be received after the Monday 20th May 2019. The maximum numbers of students for the STEM camp is 80.

EVENT:	STEM Youth Development Camp
TARGETING:	Aboriginal students from Years 5 to 10 (inclusive)
DATES:	Monday 17 <sup>th</sup> June 2019 – Wednesday 19 <sup>th</sup> June 2019
VENUE:	Berry Sport and Recreation Centre 660 Coolangatta Road, Berry NSW 2535.
EOI:	<b>Close – Monday 20<sup>th</sup> May 2019.</b>
COST:	Accommodation and meals provided by the NSW AECG – information regards food allergies etc. must be highlighted on the schools EOI and managed through the schools RISK Management process
TRANSPORT:	Responsibility of and organised by individual schools - cost met by schools
SUPERVISION:	Individual schools must send a teacher to supervise students
TEACHER RELIEF:	Cost met by individual schools

For more information, please contact Warren Bridges at the NSW AECG Secretariat on (02) 9550 5666 or [warren.bridges@aecg.nsw.edu.au](mailto:warren.bridges@aecg.nsw.edu.au)



## Expression of Interest

STEM Camp – Berry  
17<sup>th</sup> – 18<sup>th</sup> June 2019

Name:

Date of Birth:

Age:

Sex:

Address:

Telephone:

Mobile:

Email:

T-Shirt Size:  
(Xxs, Xs, S, M, L, XL)

Local AECG:

School Name:

School Contact  
Number:

School Contact  
Person:

School Year:

## Emergency Contact Details

Name:

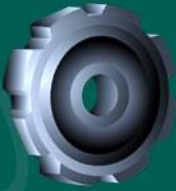
Address:

Telephone:

Mobile:

Relationship to  
Applicant:

Do you have any  
allergies or medical  
conditions?



## Science, Technology, Engineering and Mathematics STEM Camp - Information Sheet

Thank you for your interest in attending the Science, Technology, Engineering and Mathematics STEM Camp for Aboriginal students which will be held from Monday 17<sup>th</sup> June 2019 until Wednesday 19<sup>th</sup> June 2019.

- Accommodation:** 660 Coolangatta Road,  
Berry NSW 2535.
- Accommodation Facilities:** Accommodation is in bunk styled lodges. **Students will need to supply their own sleeping bag, pillow and towel.** If you require assistance with this please contact Warren Bridges on 02 9550 5666 or [warren.bridges@aecg.nsw.edu.au](mailto:warren.bridges@aecg.nsw.edu.au)
- Accommodation will be available on Sunday night the 16th June 2019 for those schools travelling large distances. If you require additional accommodation please contact Warren Bridges on 02 9550 5666 or [warren.bridges@aecg.nsw.edu.au](mailto:warren.bridges@aecg.nsw.edu.au)
- Transport:** Transport to and from Berry Sport and Recreation Centre will need to be arranged by the school. If assistance is required with transport, please contact Warren Bridges at the NSW AECG Secretariat on 02 9550 5666.
- Meals:** All meals are supplied including breakfast, lunch, dinner, morning and afternoon tea. Meals will commence with Morning tea on Monday 17<sup>th</sup> June and finish with Lunch on Wednesday 19<sup>th</sup> June 2019.  
Could you please forward any dietary requirements to [warren.bridges@aecg.nsw.edu.au](mailto:warren.bridges@aecg.nsw.edu.au)
- Supervision:** Accompanying teachers will be responsible for the supervision of their students. All schools MUST send a supervising teacher(s).
- Times and Camp Activities:** Registration for the Science, Technology, Engineering and Mathematics STEM Camp will commence at 9:00am. The workshops will start at 10.00am on Monday 17<sup>th</sup> June 2019 and finish on Wednesday 19<sup>th</sup> June 2019 after Lunch. A risk assessment and full agenda will be supplied prior to the camp.
- Photographs and filming:** An Authority to publish form will be supplied prior to the camp for photographs and filming.
- Cost:** All accommodation, meals and camp activity costs are covered.

If you require any additional information or clarification, please contact the NSW AECG Secretariat on 02 9550 5666 or by email to [warren.bridges@aecg.nsw.edu.au](mailto:warren.bridges@aecg.nsw.edu.au).

Many thanks for assisting to make this happen. It should be a great learning opportunity for students to engage in their culture and see the relevance of STEM.

